

London Independent Girls' Schools Consortium (Group 2): 11+ Maths 2015

School: London Independent Girls' Schools Consortium (Group 2)

Subject: Maths

Level: 11+

Time: 75 mins

Type: Past Test Paper

Year in use: 2015

[Download Paper](#) 

[Hide Answers](#)

Q.	Answer	Solution
1.	3023	
2.	1667	
3.	24192	
4.	336	
5.	81	

6. (a) 40.5
(b) 0.7

7. 1.746

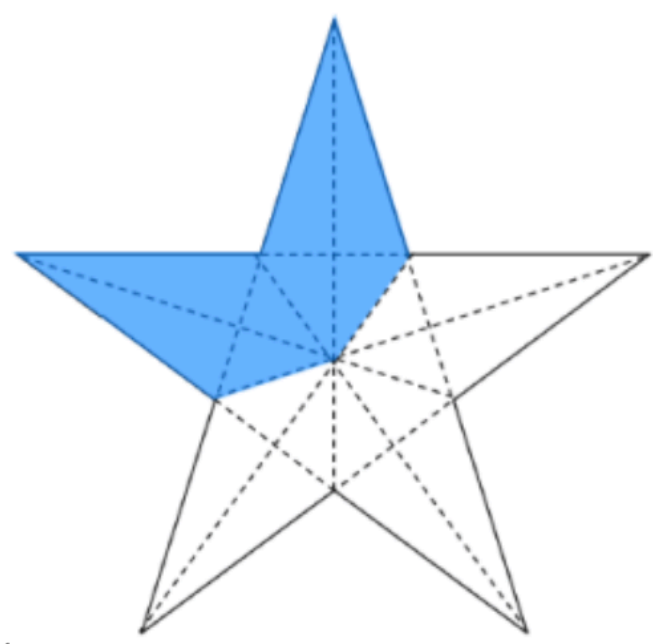
8. 87

9. $\frac{5}{9}$

10. 3.043 , 3.304 , 3.34 , 3.4

11.

(a)



(b) $\frac{4}{9}$

12.

(a) 29

(b) 3

(c) $\frac{1}{4}$

13. (a) 7000
(b) 15610

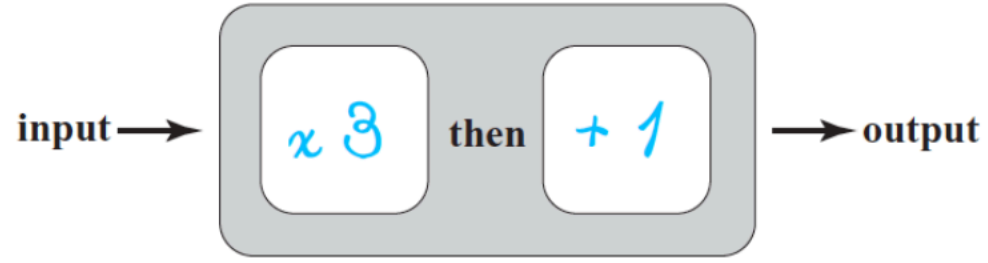
14. 4 and 14

(a)

input	output
2	0
5	6
1	-2
-2	-8

(b)

15.



16. 17:13

17. £2.90

18. 14 pizzas

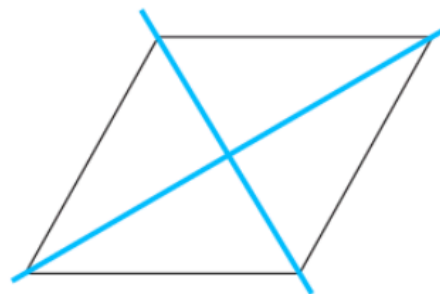
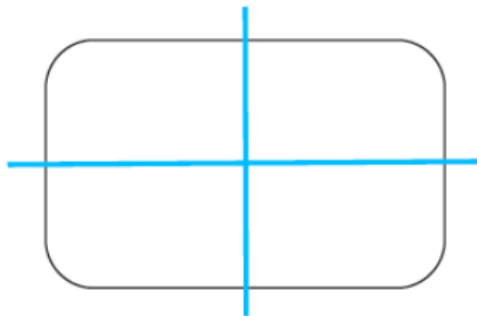
19. 150 g

20. 36

21. £72.75

22. (a) 7.5
(b) 37.5
(c) 888
(d) 2700

23.



rhombus

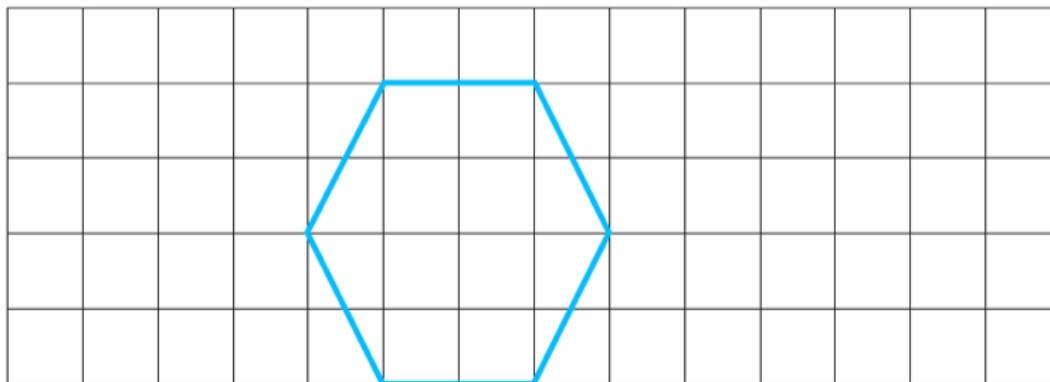
24.

- (a) 70 g
(b) 4.2 oz

25.

- (a) 27th December 2002
(b) Saturday

26.

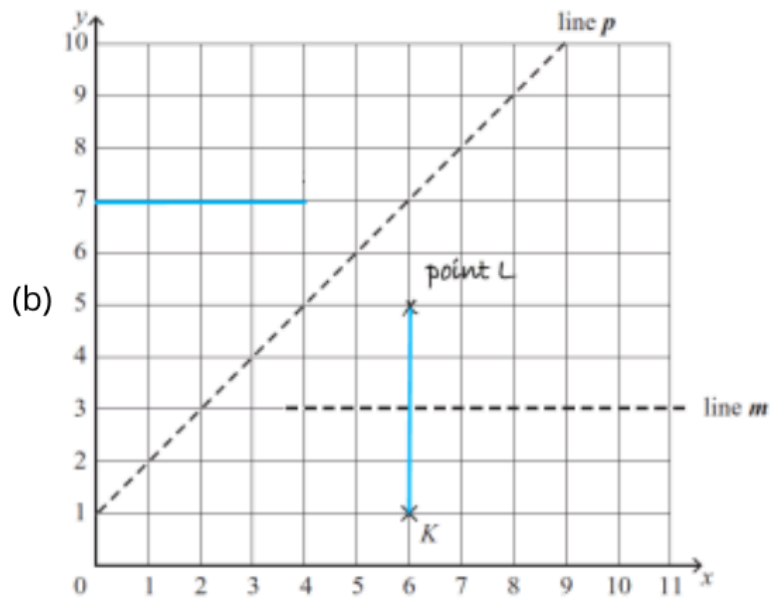


27. (a)

	Spongeton	Bobville	Squareford	Pantsbridge
train 1	10:45	11:10	11:42	12:04
train 2	11:30	11:46	12:18	12:40
train 3	12:15	12:51	13:22	13:45

(b) train 3

28. (a) (6 , 1)



29.

faces	edges	vertices
12	20	10

30. (a) 10 and 11
(b) 37
(c) A. equally likely
B. Di most likely to Win

31. 10:40

32. 8 cm

33. (a) (i) $3\frac{1}{2}$
(ii) 4

(b) Annabel is correct because the mode is the value (i.e. the shoe size 4) that occur the most often, NOT the highest number of occurrence (i.e. 12 people).

name	number of correct answers	number of wrong answers	total points
Rebecca	7	13	-5
Safiya	14	6	30
Tosin	4	16	-20
Ursula	8	12	0

35. 43 cm^2

36. (a) £11.2
(b) 6 mangoes

37. 48

38. a = 5
b = 2
c = 10
d = 12
e = 6
f = 23

39. (a) 12
(b) 8
(c) 125

40. (a) 110
(b) 1001
(c) 99 , 101
(d) 212
(e) 10301 , 11111 , 20102

41. (a) A -> E -> D -> B -> C -> F -> G
(b) 69 min